

East Eagle Substation Final Façade Design

Final Design for the East Eagle Substation Façade

Final Design influenced by the feedback and recommendations of the East Boston neighborhood



Note: These are illustrated renderings and the final built design may vary based on in-field conditions.

Downlighting above artwork added
(feedback from open houses)

Perforated metal lighting added
(feedback from open houses)



Note: These are illustrated renderings and the final built design may vary based on in-field conditions.



Note: These are illustrated renderings and the final built design may vary based on in-field conditions.

Lighting from Urban Wild side removed
(feedback from focus group)



Note: These are illustrated renderings and the final built design may vary based on in-field conditions.



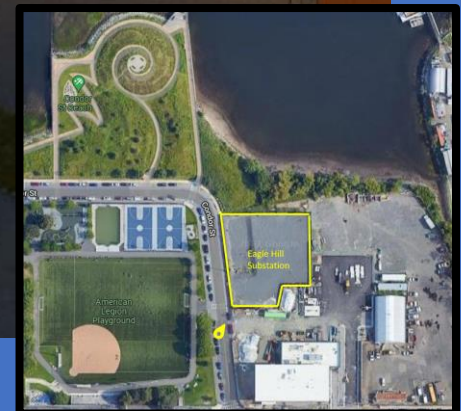
Note: These are illustrated renderings and the final built design may vary based on in-field conditions.



Note: These are illustrated renderings and the final built design may vary based on in-field conditions.



Note: These are illustrated renderings and the final built design may vary based on in-field conditions.



Note: These are illustrated renderings and the final built design may vary based on in-field conditions.