

Connecticut
Non-Residential Renewable Energy Solutions
Netting & Buy-All Program Guidelines

8/8/2023

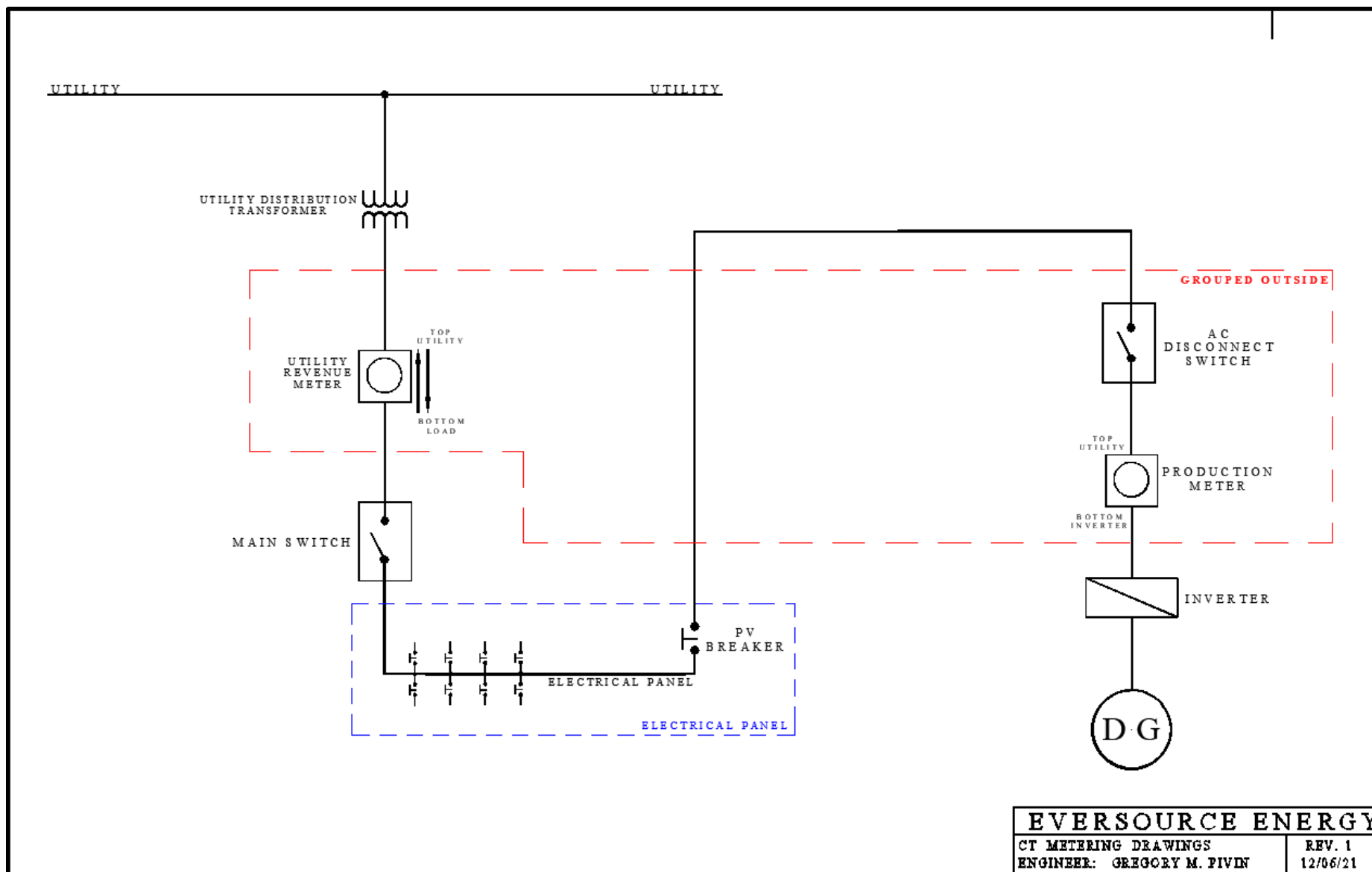
METERING GUIDELINES FOR NETTING AND BUY-ALL INSTALLATIONS

- This guideline has been prepared to assist Installers with Non-Residential Solar Renewable Energy Solutions (NRES) applications for the Netting and Buy-All programs available in Connecticut
- The diagrams and guidelines included in this document are based on the existing service that the distributed generation (DG) will be connecting to and are not construction diagrams
- Refer to the available metering chart for requirements
- Project owners shall clearly label the meter socket with the Non-Residential Renewable Energy Solutions project number
- Installers shall follow the Company's Information and Requirements for Electric Supply booklet
- All DG must have an AC emergency disconnect. The disconnect must have a verifiable break with the ability to lock it in the OFF position. Breakers, push bottoms, or other means will not be considered for the DG emergency disconnect
- Projects shall be reviewed and approved by the Company prior to construction

AVAILABLE METERING

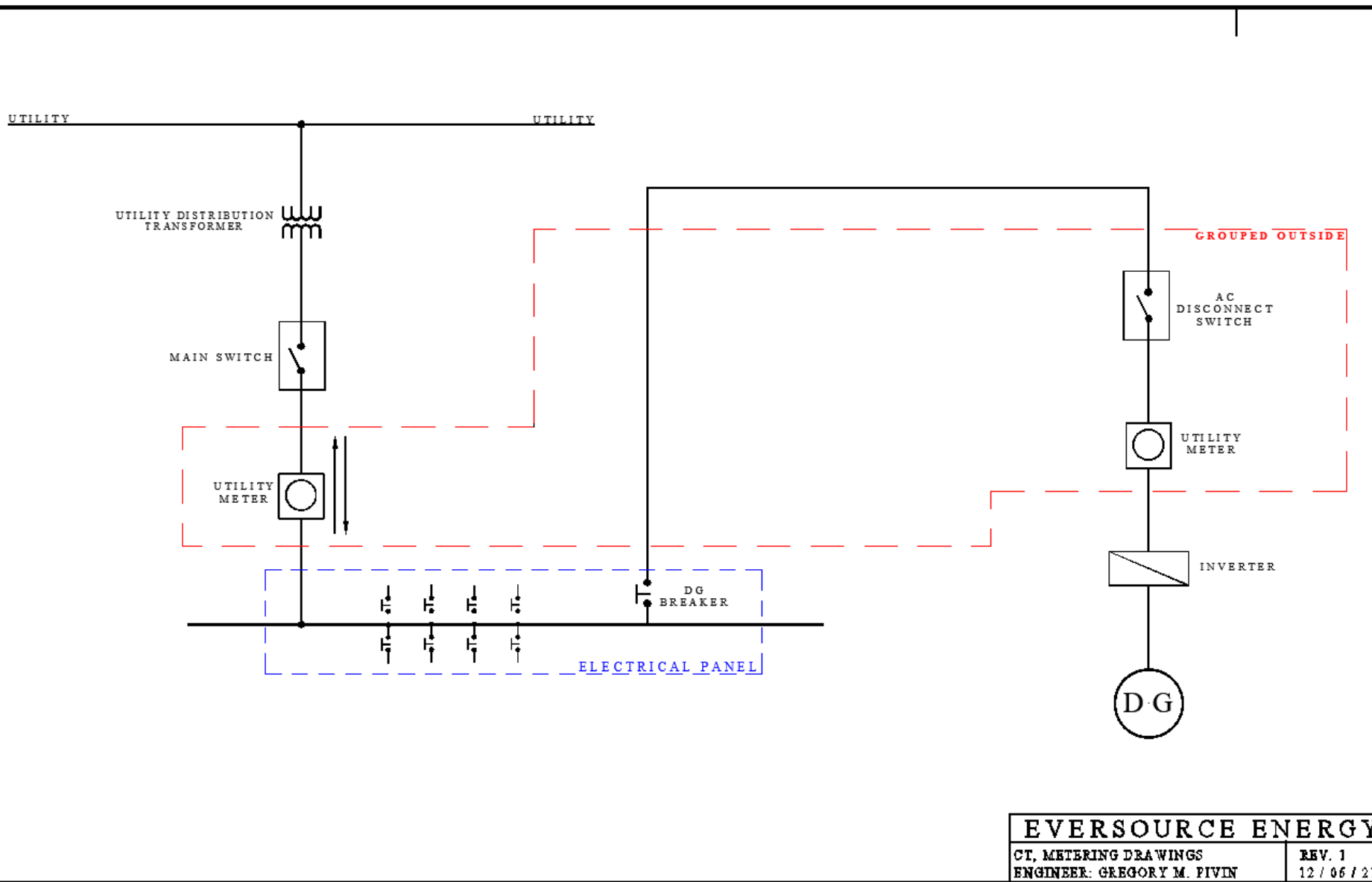
Self Contained Metering			
Supply Characteristics			
Nominal Voltage	Phase	Wire	Rating of Disconnects
120/240	1	3	400 Amps and less
120/208	1	3	200 Amps and less
208Y/120	3	4	400 Amps and less
480Y/277	3	4	400 Amps and less
Instrument Transformer Metering			
Supply Characteristics			
Nominal Voltage	Phase	Wire	Rating of Disconnects
120/240	1	3	Over 400 Amps
120/208	1	3	Not Available
208Y/120	3	4	Over 400 Amps
480Y/277	3	4	Over 400 Amps

NETTING, SINGLE PHASE, SELF-CONTAINED



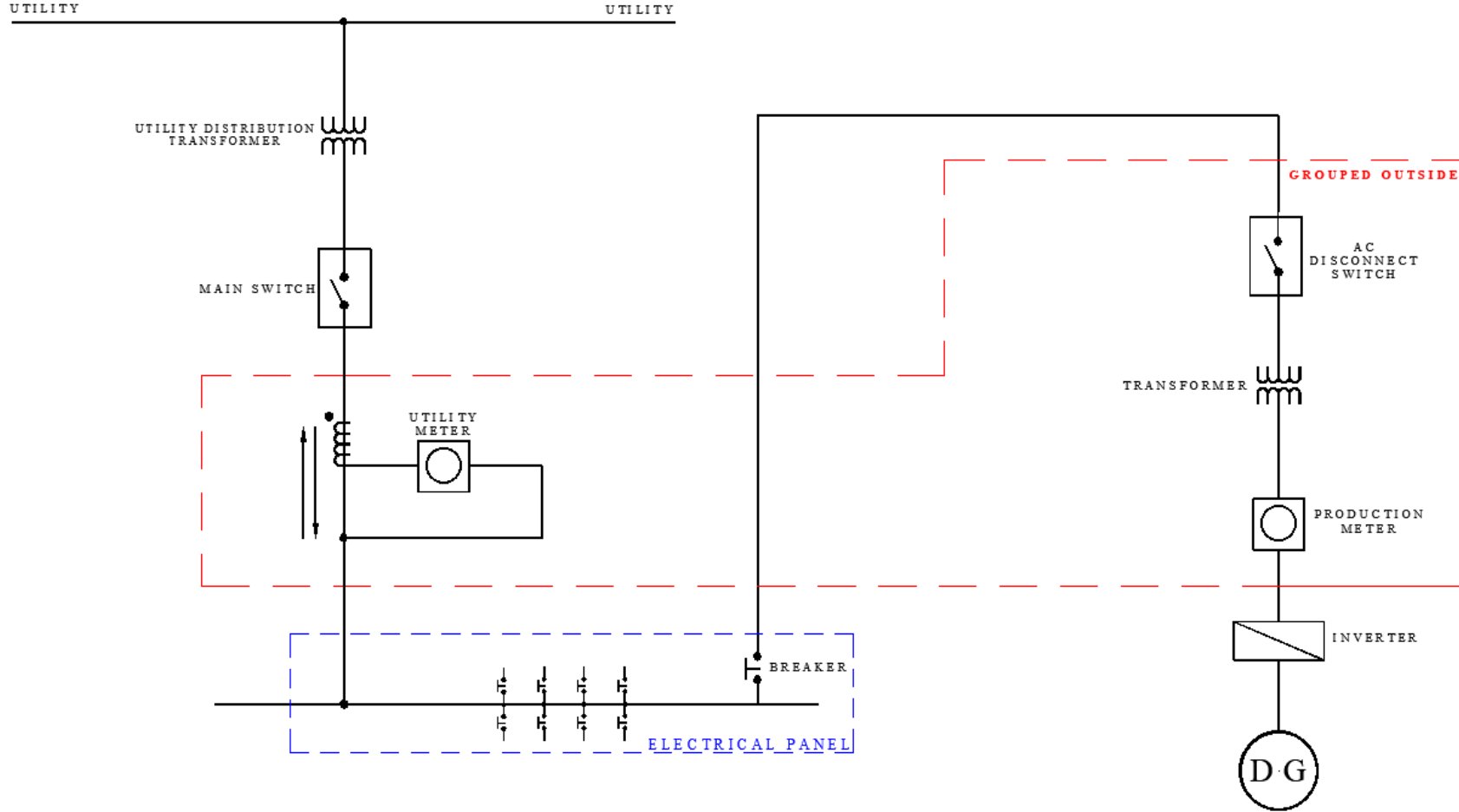
- a. Interconnection points shall be located behind the Company revenue meter and/or the instrument transformer enclosures
- b. No interconnections shall be made within the Company revenue meter or instrument transformer compartment
- c. Meter equipment must be approved by the Company
- d. Meters shall be located outside, on the ground level, grouped together, and accessible by the Company at all times. Relocating meters may require a second work request
- e. Meter sockets shall be clearly labeled
- f. Self-contained meter sockets shall be wired top side utility, bottom side inverter
- g. The AC emergency disconnect switch shall be located ahead of production meters
- h. Services 400A or less that are currently metered with instrument transformers should be upgraded to a self-contained meter socket

NETTING, THREE PHASE, SELF-CONTAINED



- a. Interconnection points shall be located behind the Company revenue meter and/or the instrument transformer enclosures
- b. No interconnections shall be made within the Company revenue meter or instrument transformer compartment
- c. Meter equipment must be approved by the Company
- d. Meters shall be located outside, on the ground level, grouped together, and accessible by the Company at all times. Relocating meters may require a second work request
- e. Meter sockets shall be clearly labeled
- f. Self-contained meter sockets shall be wired top side utility, bottom side inverter
- g. The AC emergency disconnect switch shall be located ahead of production meters
- h. Services 400A or less that are currently metered with instrument transformers should be upgraded to a self-contained meter socket

NETTING, THREE PHASE, INSTRUMENT RATED



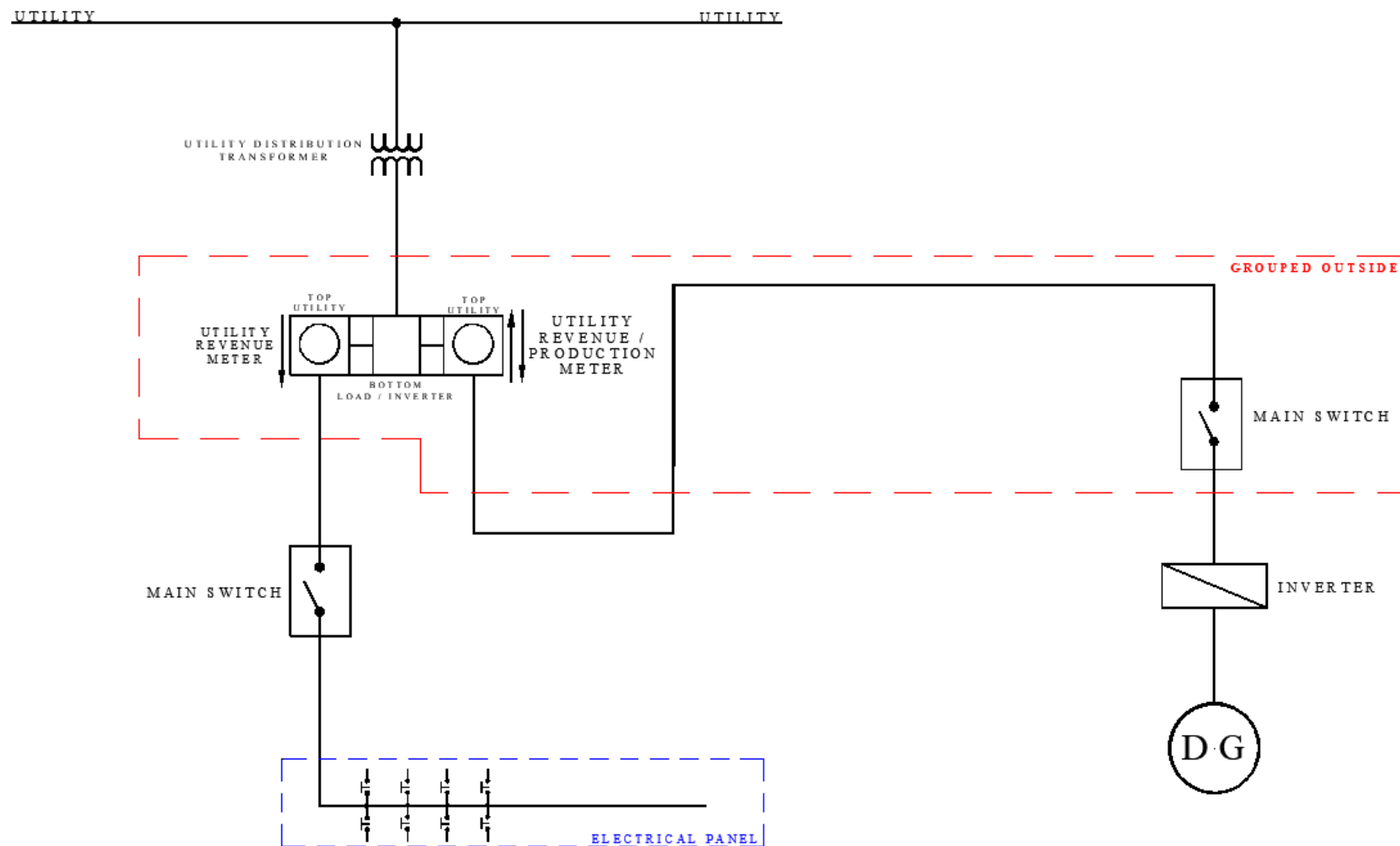
- a. Interconnection points shall be located behind the Company revenue meter and/or the instrument transformer enclosures
- b. No interconnections shall be made within the Company revenue meter or instrument transformer compartment
- c. Meter equipment must be approved by the Company
- d. Meters shall be located outside, on the ground level, grouped together, and accessible by the Company at all times. Relocating meters may require a second work request
- e. Meter sockets shall be clearly labeled
- f. Self-contained meter sockets shall be wired top side utility, bottom side inverter
- g. The AC emergency disconnect switch shall be located ahead of production meters
- h. Services 400A or less that are currently metered with instrument transformers should be upgraded to a self-contained meter socket

EVERSOURCE ENERGY
CT, METERING DRAWINGS
ENGINEER, GREGORY M. PIVIN
REV. 1
12/06/21

BUY ALL INSTALLATION GUIDELINES

1. Initial contingent approval is not an approval of the final detailed design. It is a contingent approval of the system size, general location, and system impacts that require mitigation, if any.
2. Buy-All projects require a work request for electrical work or upgrade of service. Once customer conceptual design and equipment specifications are determined, contact the Electric Service Support Center at 1-888-544-4826 to obtain a work request number.
3. Once the work request is initiated, the Company will coordinate a field visit if required.
4. Customer construction and procurement of equipment shall not start until final approval has been granted by the Company.
5. Secondary loading shall not exceed the rating of the secondary service.
6. Buy-All interconnections are for generation only. No load additions shall be added without approval from the Company.
7. Buy-All installations that include load (i.e., battery storage) cannot exceed the Company's service limitations. Refer to the Company's Information & Requirements for Electric Supply booklet and new business policies.
8. The point of interconnection may be installed on the line side of the main disconnect in accordance with the manufacturer, UL ratings, and the Authority Having Jurisdictions (AHJ).
9. The point of interconnection shall be on the secondary of the service transformer.
10. Any modifications to switchgear must be done in accordance with the manufacturer's requirements, UL standards, and the Company's Information & Requirements for Electric Supply booklet.
11. The customer shall have sole responsibility for all secondary associated with the generator interconnection from the point of interconnection to the generator.

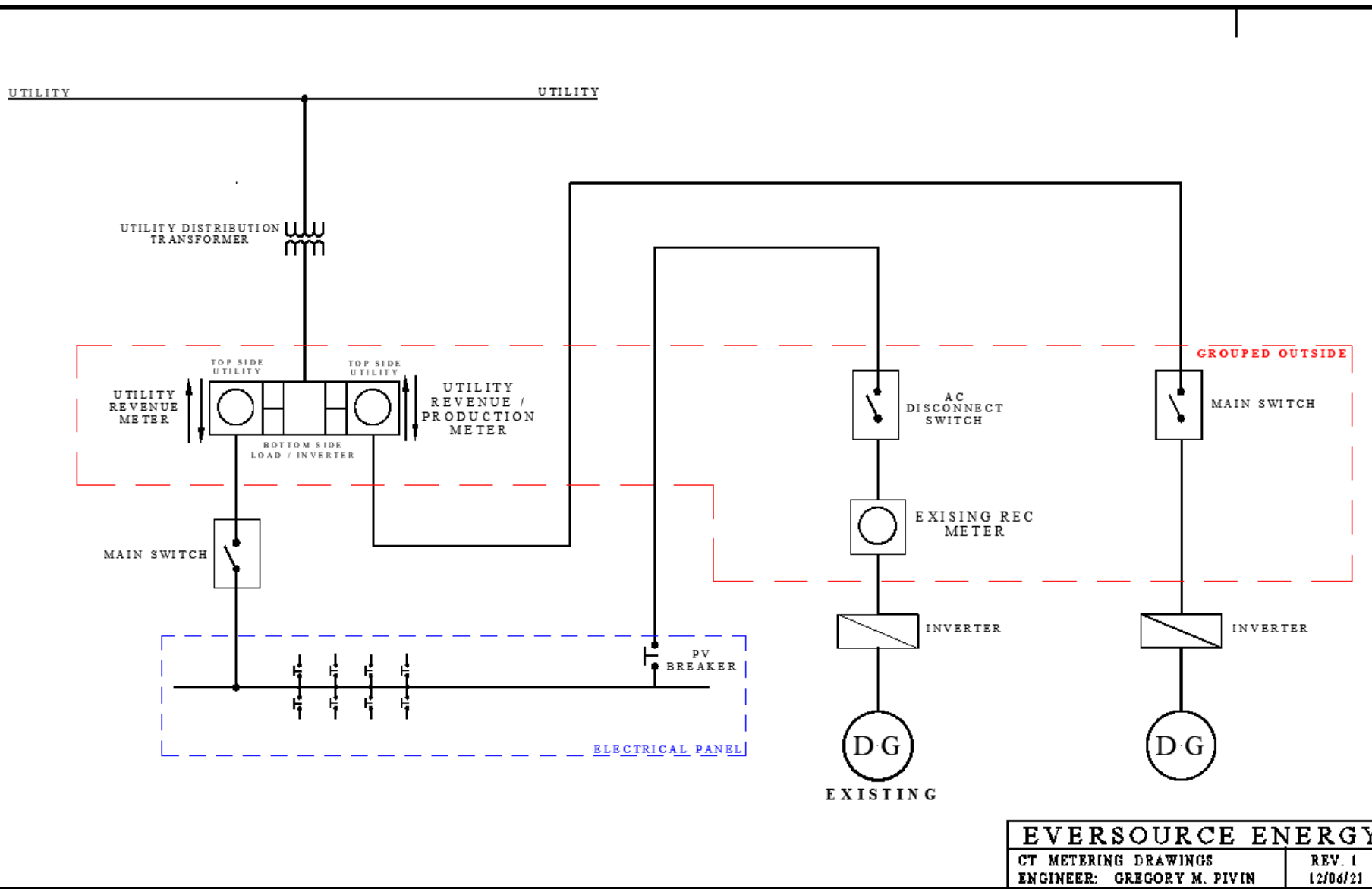
BUY ALL, SINGLE PHASE, SELF-CONTAINED



- a. Interconnection points shall be located behind the Company revenue meter and/or the instrument transformer enclosures
- b. No interconnections shall be made within the Company revenue meter or instrument transformer compartment
- c. Revenue and production meter equipment must be approved by the Company
- d. DG designs and interconnections require Company approval
- e. Meters shall be located outside, on the ground level, grouped together, and accessible by the Company at all times
- f. Meter sockets shall be clearly labeled
- g. Self-contained meter sockets shall be wired top side utility, bottom side inverter
- h. The disconnect used for cold-sequence metering cannot be used as DG's emergency AC disconnect. The DG's emergency AC disconnect switch must be installed after the Company revenue/ production meter

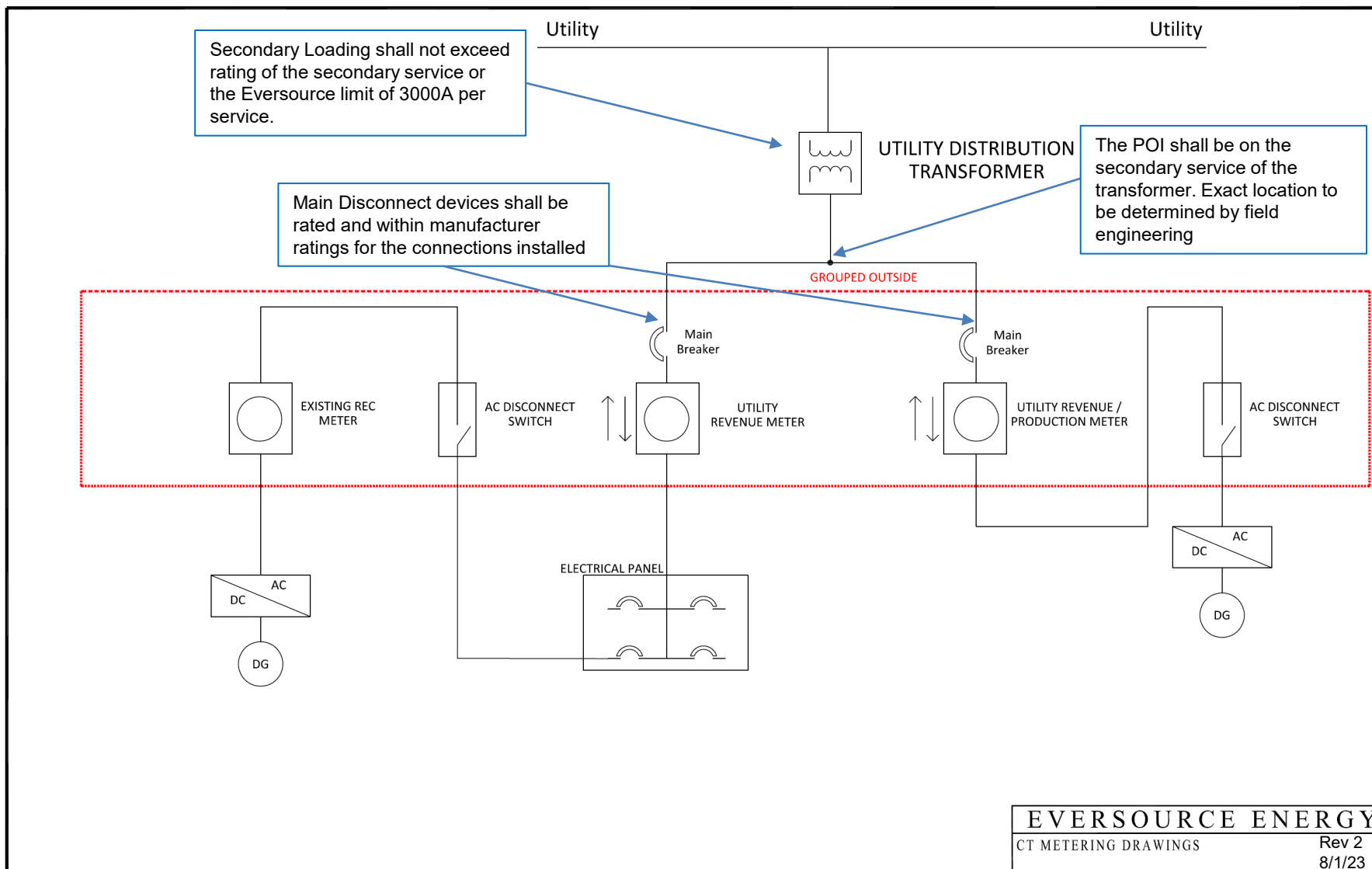
EVERSOURCE ENERGY
CT METERING DRAWINGS
ENGINEER: GREGORY M. PIVIN
REV. 1
12/06/21

BUY ALL, EXISTING SOLAR, SINGLE PHASE, SELF-CONTAINED



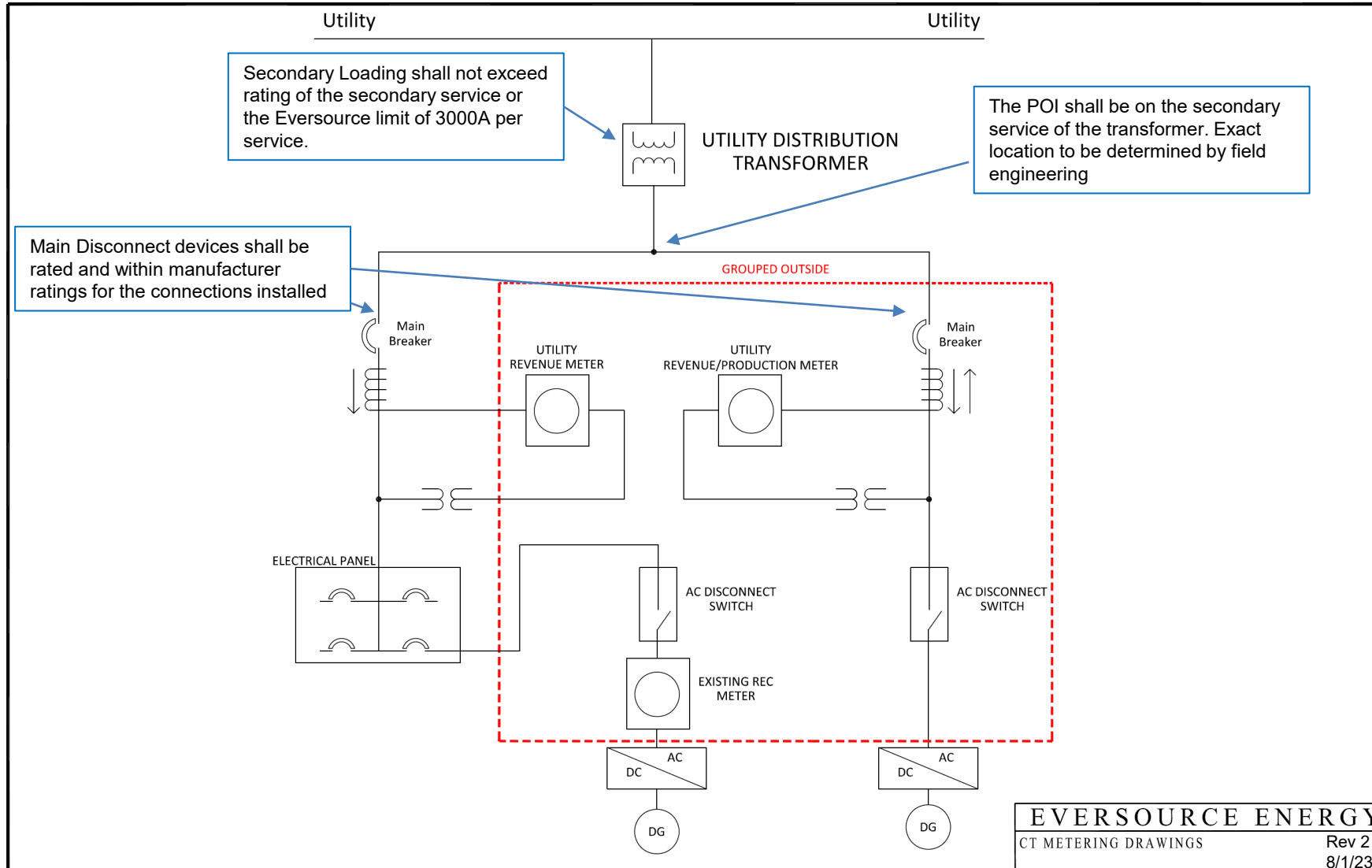
- a. Interconnection points shall be located behind the Company revenue meter and/or the instrument transformer enclosures
- b. No interconnections shall be made within the Company revenue meter or instrument transformer compartment
- c. Revenue and production meter equipment must be approved by the Company
- d. DG designs and interconnections require Company approval
- e. Meters shall be located outside, on the ground level, grouped together, and accessible by the Company at all times
- f. Meter sockets shall be clearly labeled
- g. Self-contained meter sockets shall be wired top side utility, bottom side inverter
- h. The disconnect used for cold-sequence metering cannot be used as DG's emergency AC disconnect. The DG's emergency AC disconnect switch must be installed after the Company revenue/ production meter

BUY-ALL, EXISTING SOLAR, THREE PHASE, SELF-CONTAINED, COLD SEQUENCE



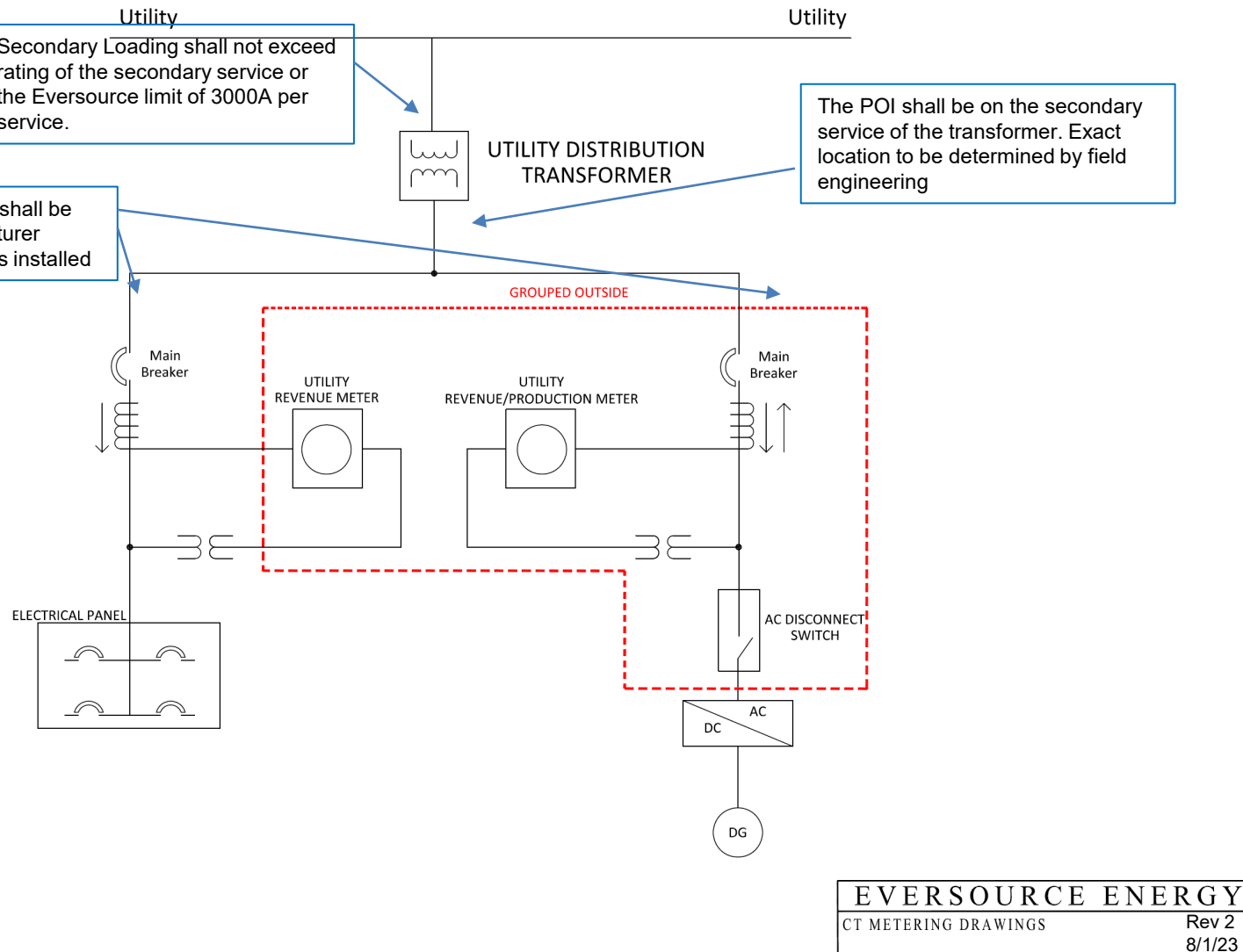
- Interconnection points shall be located behind the Company revenue meter and/or the instrument transformer enclosures
- No interconnections shall be made within the Company revenue meter or instrument transformer compartment
- Revenue and production meter equipment must be approved by the Company
- DG designs and interconnections require Company approval
- Meters shall be located outside, on the ground level, grouped together, and accessible by the Company at all times
- Meter sockets shall be clearly labeled
- Self-contained meter sockets shall be wired top side utility, bottom side inverter
- The disconnect used for cold-sequence metering cannot be used as DG's emergency AC disconnect. The DG's emergency AC disconnect switch must be installed after the Company revenue/ production meter

BUY-ALL, THREE PHASE, EXISTING NET METERING, EXISTING STRUCTURE



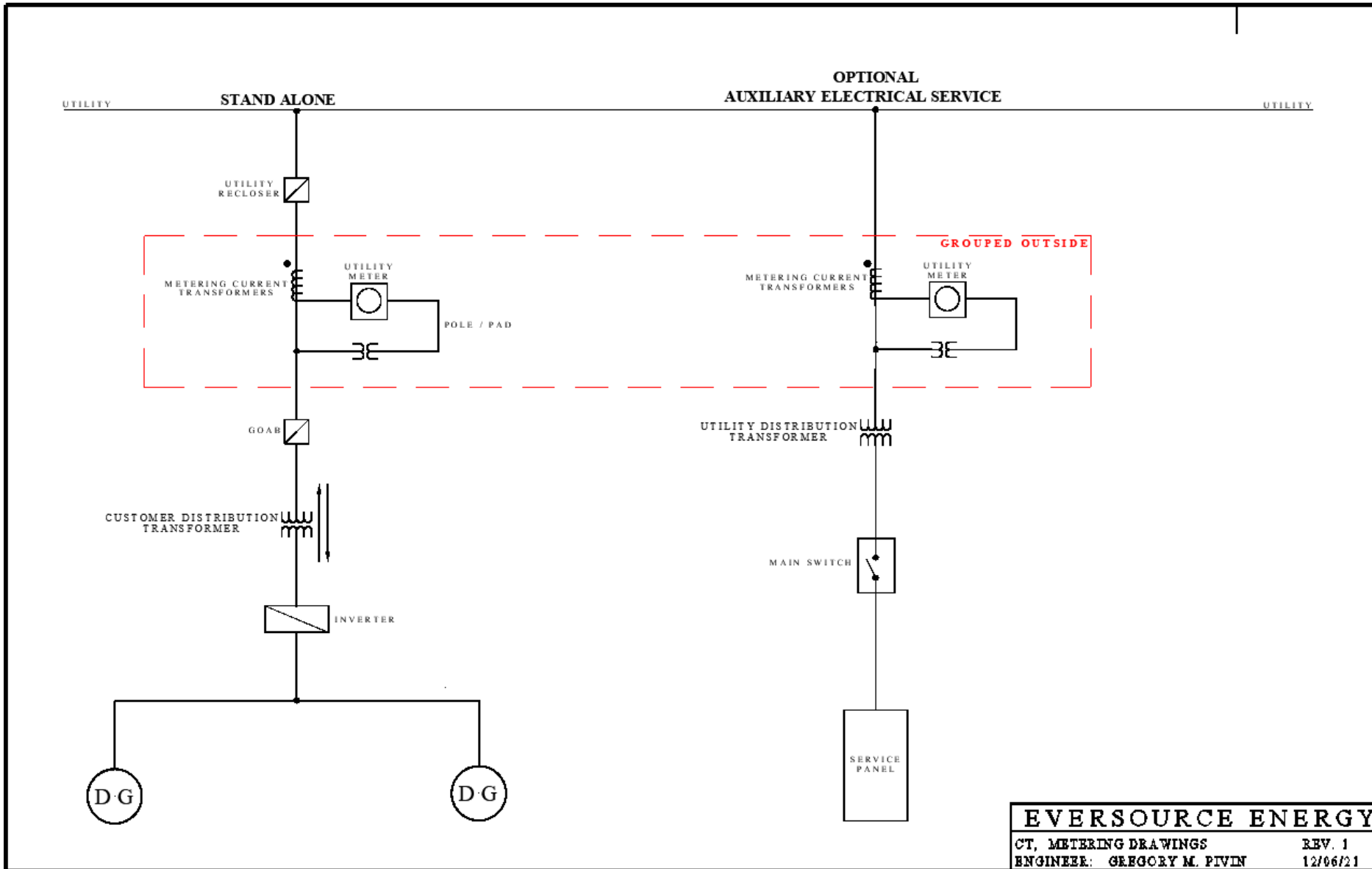
- Interconnection points shall be located behind the Company revenue meter and/or the instrument transformer enclosures
- No interconnections shall be made within the Company revenue meter or instrument transformer compartment
- Revenue and production meter equipment must be approved by the Company
- DG designs and interconnections require Company approval
- Meters shall be located outside, on the ground level, grouped together, and accessible by the Company at all times
- Meter sockets shall be clearly labeled
- Self-contained meter sockets shall be wired top side utility, bottom side inverter
- The disconnect used for cold-sequence metering cannot be used as DG's emergency AC disconnect. The DG's emergency AC disconnect switch must be installed after the Company revenue/ production meter

BUY-ALL, THREE PHASE, INSTRUMENT RATED, EXISTING STRUCTURE



- Interconnection points shall be located behind the Company revenue meter and/or the instrument transformer enclosures
- No interconnections shall be made within the Company revenue meter or instrument transformer compartment
- Revenue and production meter equipment must be approved by the Company
- DG designs and interconnections require Company approval
- Meters shall be located outside, on the ground level, grouped together, and accessible by the Company at all times
- Meter sockets shall be clearly labeled
- Self-contained meter sockets shall be wired top side utility, bottom side inverter
- The disconnect used for cold-sequence metering cannot be used as DG's emergency AC disconnect. The DG's emergency AC disconnect switch must be installed after the Company revenue/ production meter

BUY-ALL, PRIMARY METER, GENERATION ONLY TYPE SERVICE



- a. Interconnection points shall be located behind the Company revenue meter and/or the instrument transformer enclosures
- b. No interconnections shall be made within the Company revenue meter or instrument transformer compartment
- c. Revenue and production meter equipment must be approved by the Company
- d. DG designs and interconnections require Company approval
- e. Meters shall be located outside, on the ground level, grouped together, and accessible by the Company at all times
- f. Meter sockets shall be clearly labeled
- g. Self-contained meter sockets shall be wired top side utility, bottom side inverter
- h. The disconnect used for cold-sequence metering cannot be used as DG's emergency AC disconnect. The DG's emergency AC disconnect switch must be installed after the Company revenue/ production meter